



Funding criteria for the GCF and the NAMA Facility



GCF ready to start

- GCF initial resource mobilisation successful – more than USD 10 bn available!
- GCF final decisions on selection procedures will be clarified soon
- Goal to announce first projects by end of 2015

It is key to have a good understanding of the selection criteria to successfully place projects!



NAMA Facility and its link to the GCF

NAMA Facility works with a similar approach as the GCF:

- Demonstrates a framework for providing tailor-made climate finance for developing countries in the field of mitigation
- Conducts competitive calls for ambitious and transformative NAMAs
- Integrates financial and technical instruments
- Closely aligns with national strategies and plans



Selection Criteria of the NAMA Facility

Selection of NAMA Support Projects is based on three sets of criteria:

- General eligibility
- Ambition
- Feasibility/readiness

Focus:

Ambition Criteria of the NAMA Facility

Potential for
transformational
change

Mitigation
ambition

Financial
ambition

Sustainable
development
co-benefits



Selection Criteria of the GCF



GCF criteria	Definition	NAMA Facility criteria
Impact/result potential	Potential to contribute to the achievement of a fund's objectives and result areas	Ambition criteria
Paradigm shift potential	Degree to which a fund can achieve impact beyond a one-off project or programme investment	Potential for transformational change
Needs of recipient	Vulnerability and financing needs of the beneficiary country and population	Justification for international support and financial ambition
Efficiency and effectiveness	Economic, and if appropriate, financial soundness of the programme / project	Financial ambition Readiness and project design (feasibility)

Additional selection criteria of the GCF



GCF criteria	Definition	NAMA facility criteria
Sustainable development potential	Environmental co--benefits Social co-benefits Economic co-benefits Gender-sensitive development impact	Sustainable development co-benefits
country ownership	Existence of a national climate strategy Coherence with existing policies Capacity of implementing entities, intermediaries or executing entities to deliver Engagement with civil society organizations and other relevant stakeholders	Institutional capacity

Transformational Change Potential

Projects are considered to be conducive to transformational change, if they

- Contribute to enabling either a significant evolution in terms of **scope** (e.g. scaling-up or replication), or enabling a faster and/or significant shift from one state to another;
- are embedded in a national strategy and contribute to its objectives
- Have a **catalytic effect** and include mechanisms to ensure **sustainability of the impacts**, local ownership and political will, the involvement of the private sector and the use of innovative technologies and approaches, and;
- Allow for systematic **learning** processes.

Templates provide additional structuring questions.



Relevance of NAMA Facility experience for GCF

GCF criteria and NAMA Facility very similar

NAMA Facility can share experiences from:

- competitive project selection based on ambition
- experiences with selection criteria that emphasize transformational change (paradigm shift)
- combining goals of climate change mitigation and sustainable development
- emphasizing the need to leverage private investment



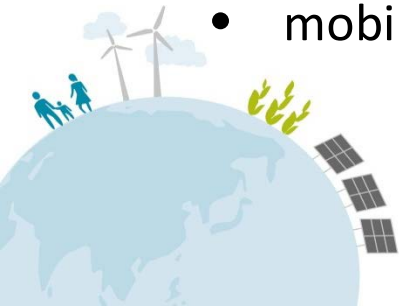
Relevance of NAMA Facility experience for submitters

- Partner countries which engaged in the NAMA Facility are very well prepared to make a submission to the GCF!
- Proposals will have to be adapted to GCF format to comply with the GCF templates compared with NAMA Facility requirements



Next steps of the NAMA Facility

- Third call will take place in 2015
- EUR 85 million available for new projects
 - Templates and exact timeline to be published soon on www.nama-facility.org
- NAMA Facility will put strong emphasis on evaluating lessons from NAMA Support Projects to contribute to:
 - the global debate on NAMA
 - operationalisation of transformational change
 - wise combination of financial and technical instruments
 - mobilisation of additional private investments for mitigation activities



NAMA Facility



Federal Ministry for the
Environment, Nature Conservation,
Building and Nuclear Safety



Department
of Energy &
Climate Change



For further information please go to
www.nama-facility.org

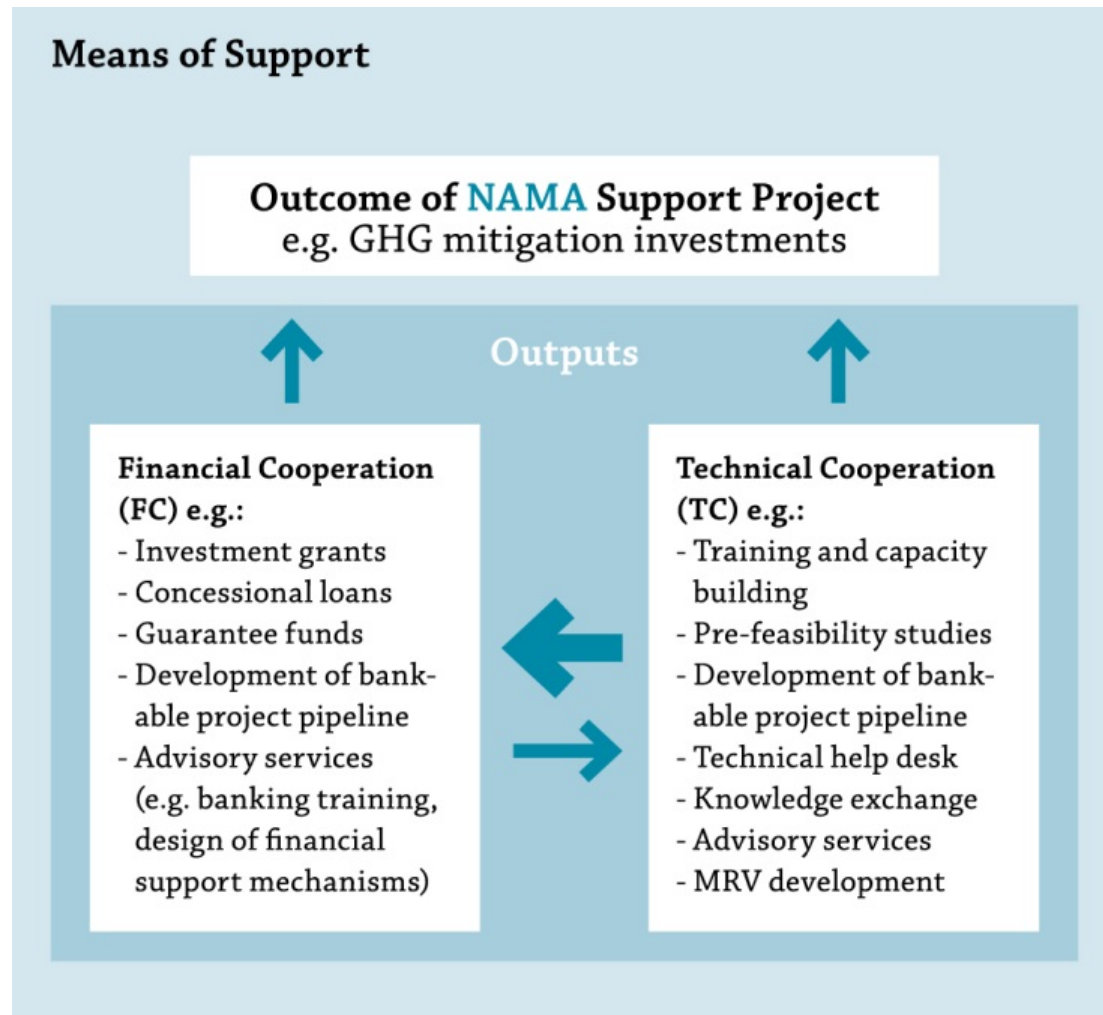
or contact the Technical Support Unit
at contact@nama-facility.org

Portfolio of the NAMA Facility

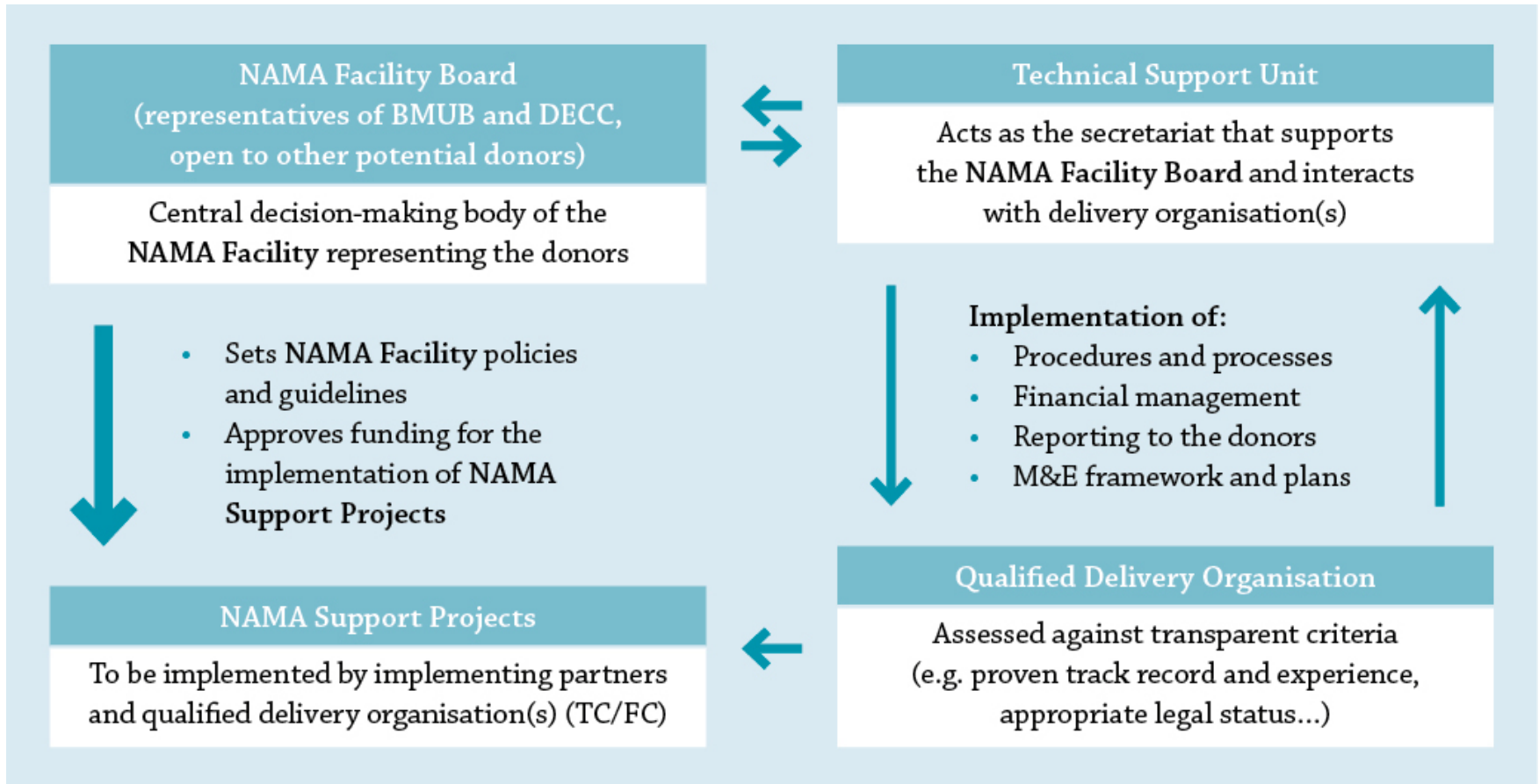


Country	NAMA Support Project	Status
Burkina Faso	Biomass Energy NAMA Support Project	Appraisal, 2 nd call
Chile	Self-Supply Renewable Energy (SSRE) NAMA	Appraisal, 1 st call
Colombia	Transit-oriented Development (TOD) NAMA	Appraisal, 1 st call
Costa Rica	Low Carbon Coffee NAMA	Appraisal, 1 st call
Indonesia	NAMA SUTRI – Sustainable Urban Transport	Appraisal, 1 st call
Mexico	Sustainable Housing NAMA	Implementation
Peru	Sustainable Urban Transport NAMA Support Project	Appraisal, 2 nd call
Tajikistan	Forestry NAMA Support Project	Appraisal, 2 nd call
Thailand	Refrigeration and Air Conditioning NAMA (RAC NAMA)	Appraisal, 2 nd call

NAMA Facility - Means of Support



Governance of the NAMA Facility



Project Cycle of the NAMA Facility

